

D E E P S P A C E
TERRAFORMERS

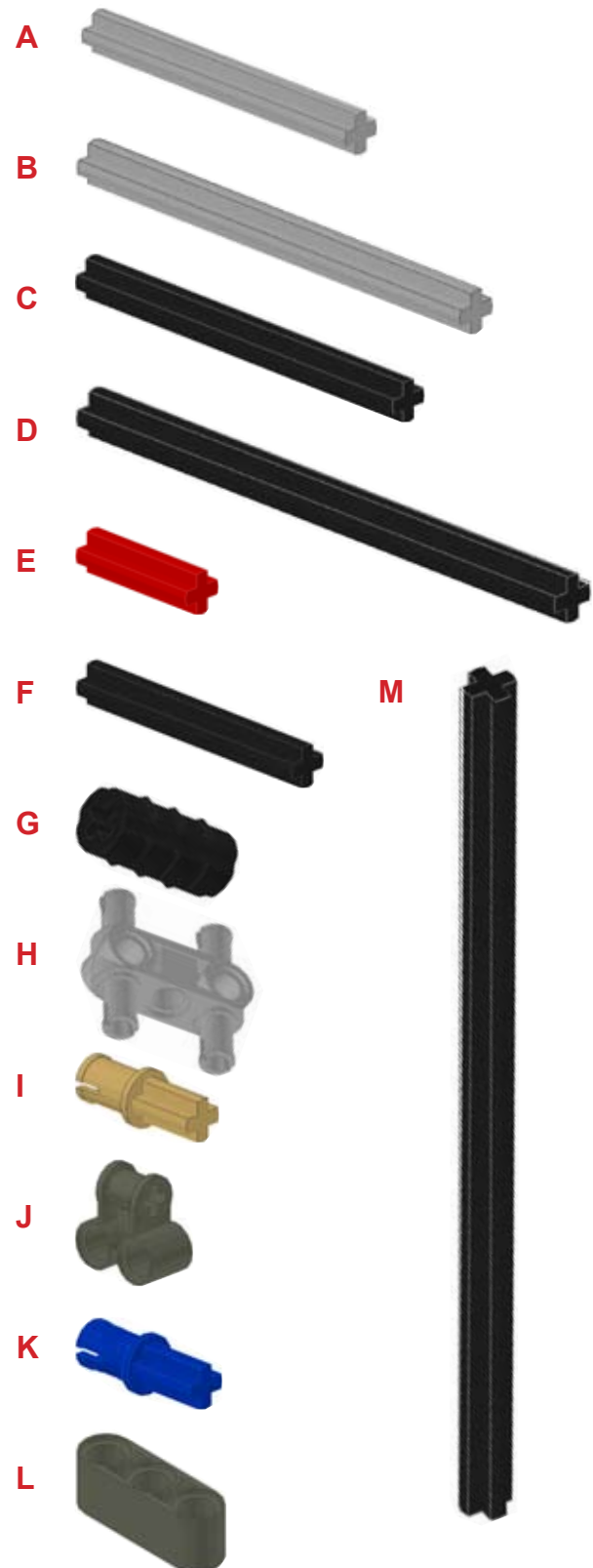
Intergalactic Star Shuttle
Entropy

Building Instructions



I.S.S Entropy Materials

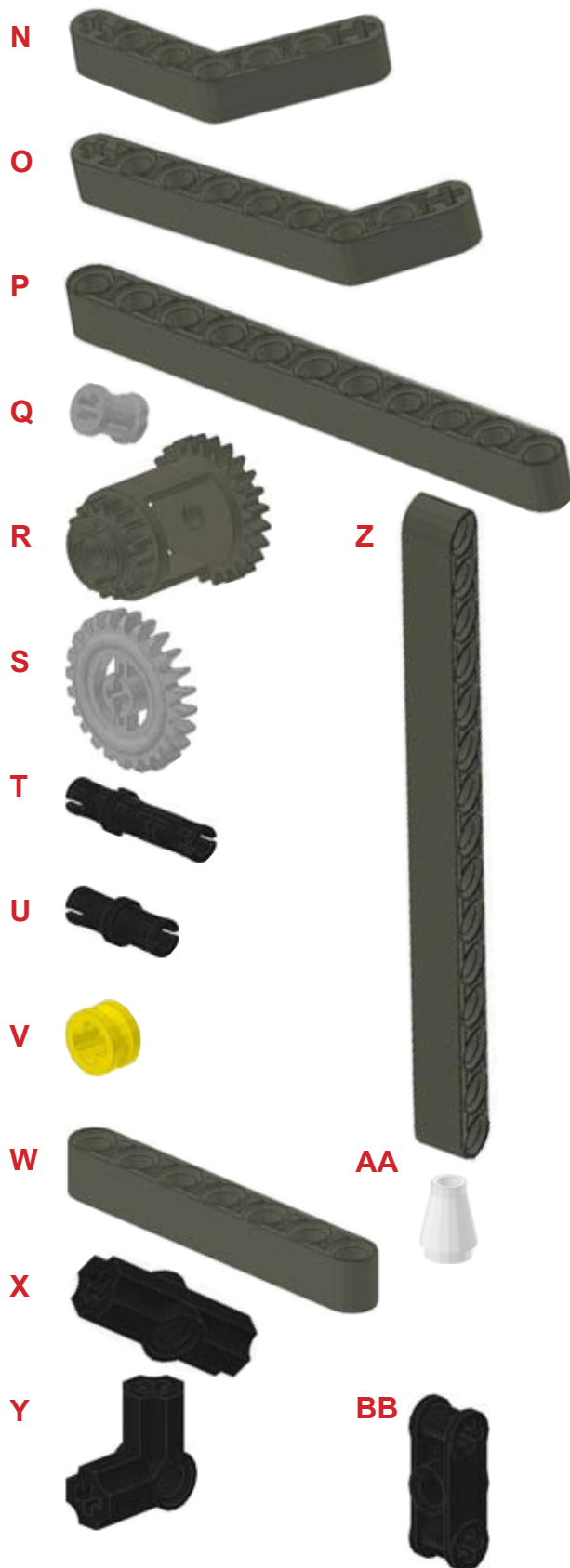
4X TECHNIC Axle 5	A
6X TECHNIC Axle 7	B
2X TECHNIC Axle 6	C
2X TECHNIC Axle 8	D
4X TECHNIC Axle 2	E
3X TECHNIC Axle 4	F
2X TECHNIC Axle Joiner	G
2X TECHNIC Axle Joiner Perpendicular 4 Pins	H
3X TECHNIC Axle Pin	I
1X TECHNIC Axle Joiner Perpendicular Double	J
34X TECHNIC Axle Pin with Friction	K
1X TECHNIC Beam 3	L
2X TECHNIC Axle 12	M



I.S.S Entropy

Materials (continued)

2X TECHNIC Beam 7 Bent 4:4	N
4X TECHNIC Beam 9 Bent 7:3	O
2X TECHNIC Beam 11	P
9X TECHNIC Bush	Q
1X TECHNIC Differential	R
1X TECHNIC Gear 24 Tooth Crown	S
2X TECHNIC Pin Long with Friction	T
18X TECHNIC Pin with Friction	U
10X TECHNIC Bush 1/2 Smooth	V
1X TECHNIC Beam 3	W
3X TECHNIC Angle Connector #2	X
12X TECHNIC Angle Connector #6	Y
2X TECHNIC Beam 15	Z
1X Cone 1 x 1	AA
8X TECHNIC Axle Joiner Perpendicular 3L	BB

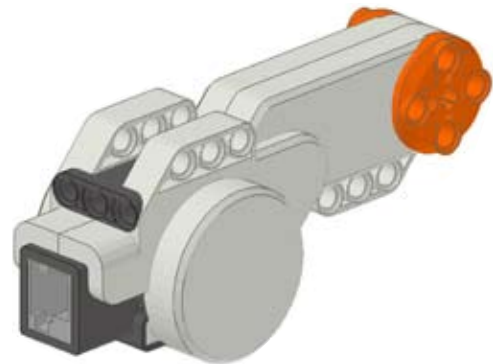


I.S.S Entropy

Materials (continued)

4X Mindstorm NXT Motor	CC
4X Mindstorm NXT	DD
2X Mindstorm NXT RJ12 Cable	EE
7X Wheel 43.2 x 22 without Pinholes	FF
2X Wheel 81.6 x15 Motorcycle	GG
2X Tyre 43.2 x 22 ZR	HH
2X Tyre 20 x 30 Balloon Medium	II

CC



DD



EE



FF



HH



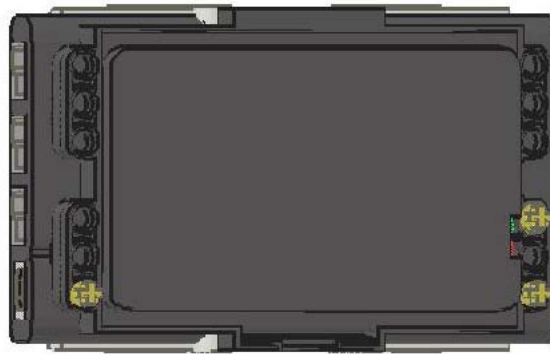
GG



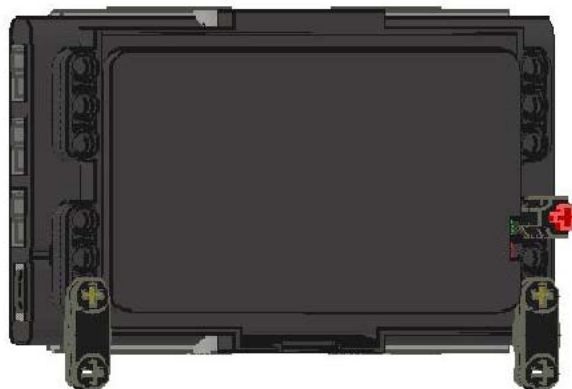
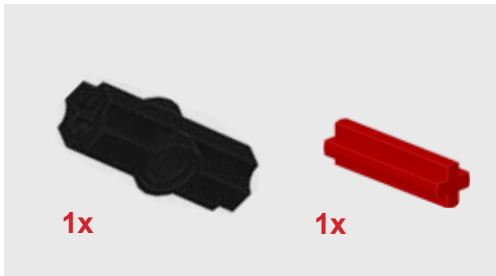
II



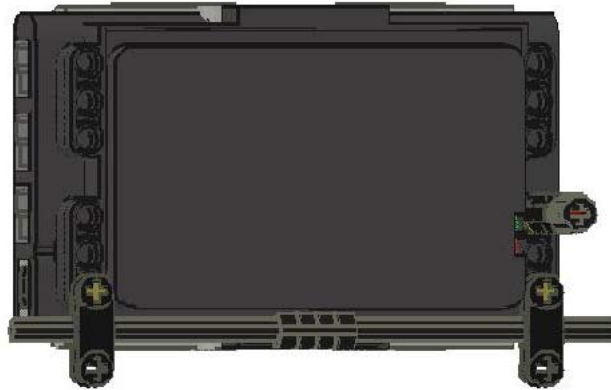
1



2



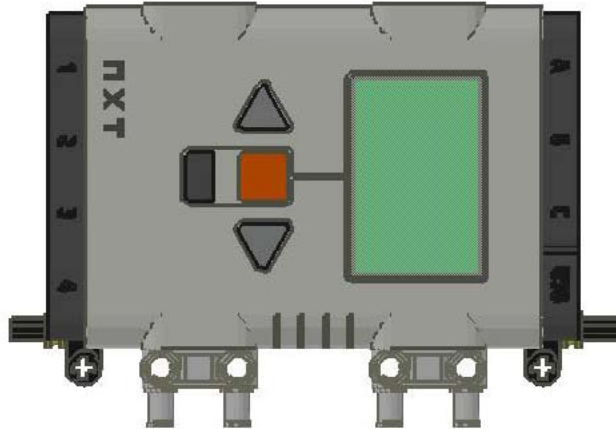
3



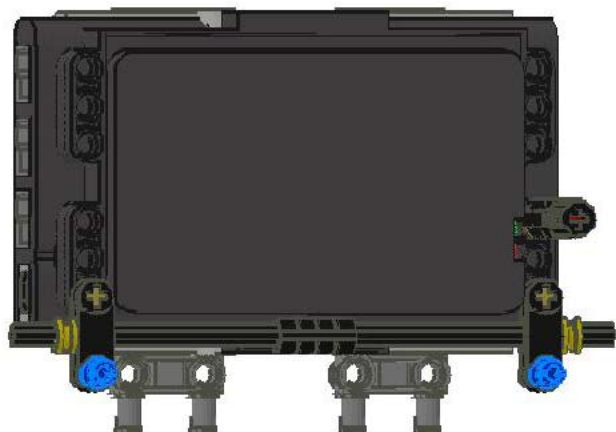
4



5



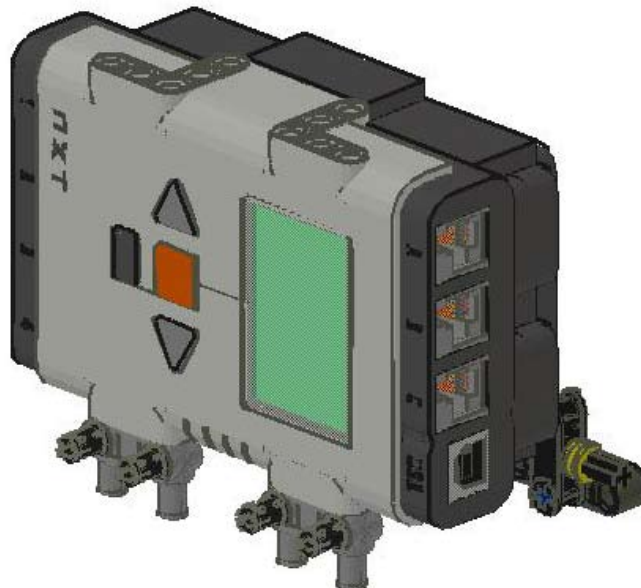
6



7



8



9



10



11



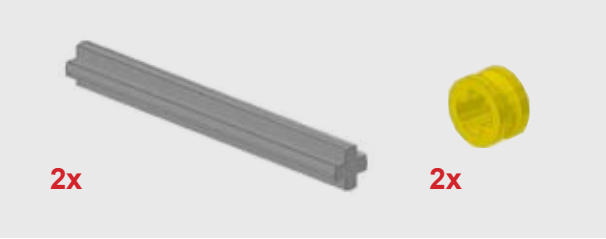
12



13



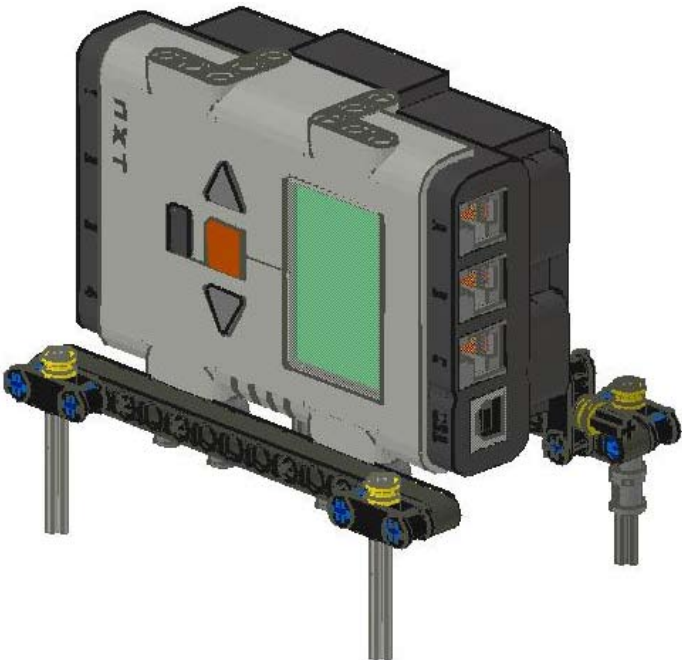
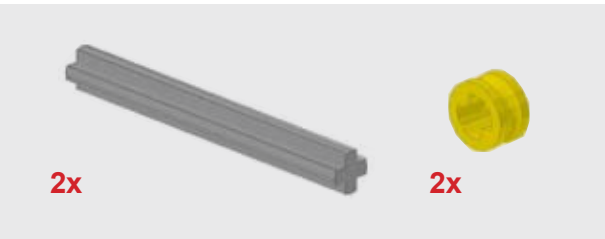
14



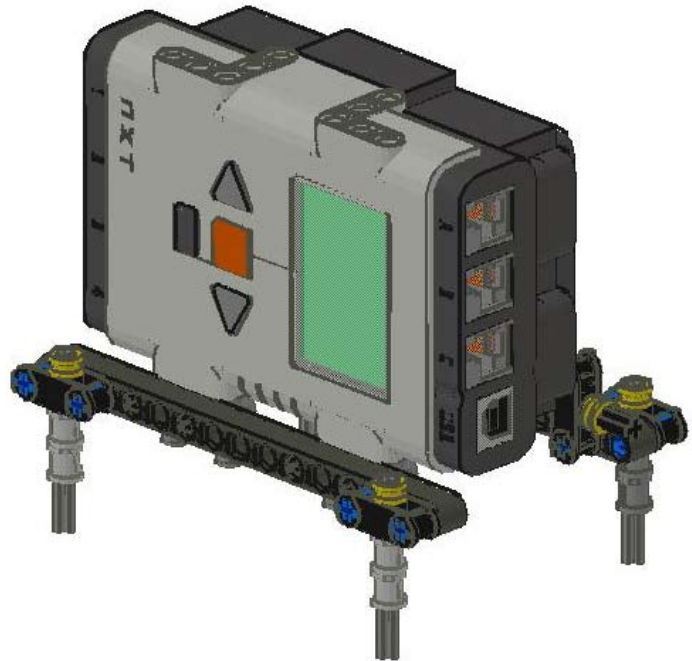
15



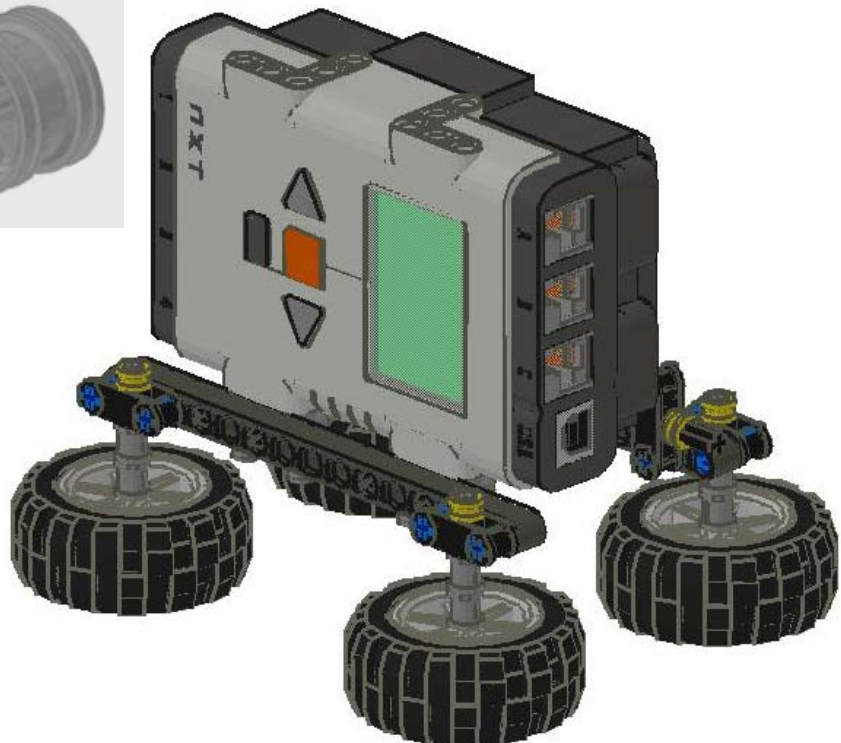
16



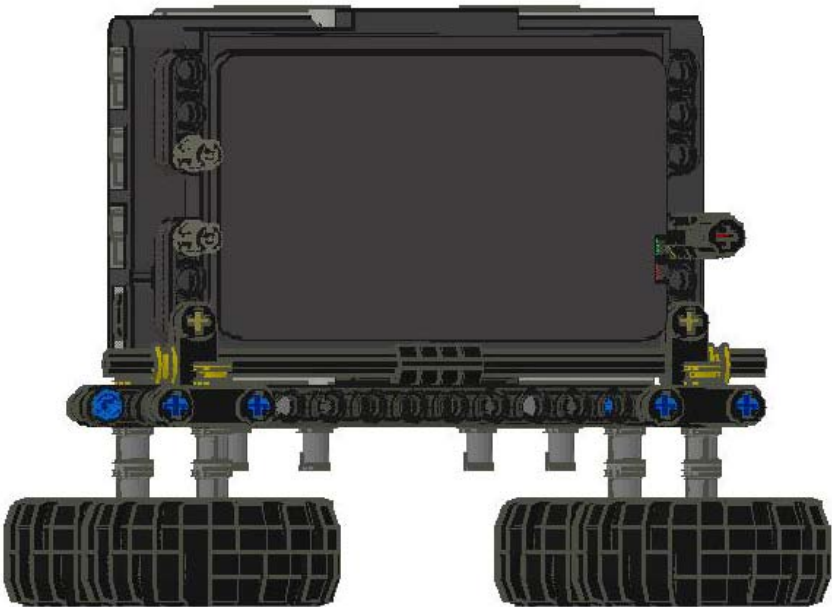
17



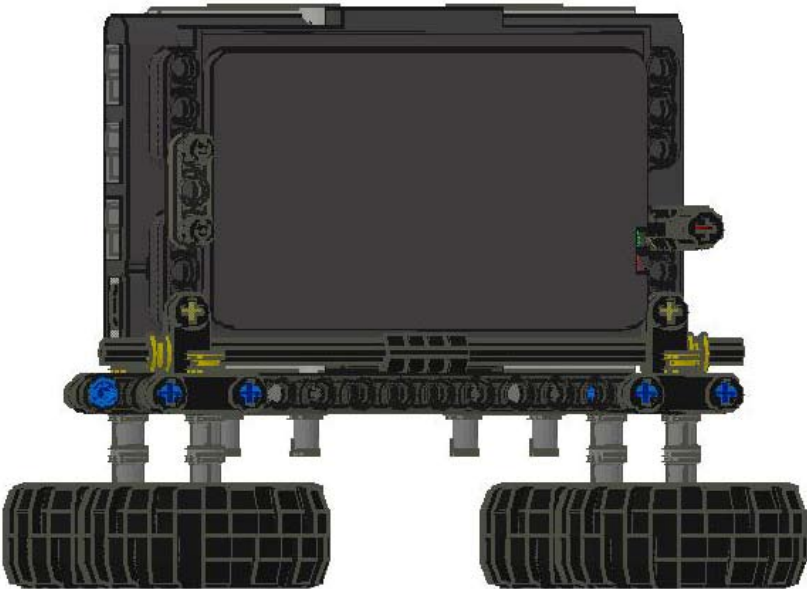
18



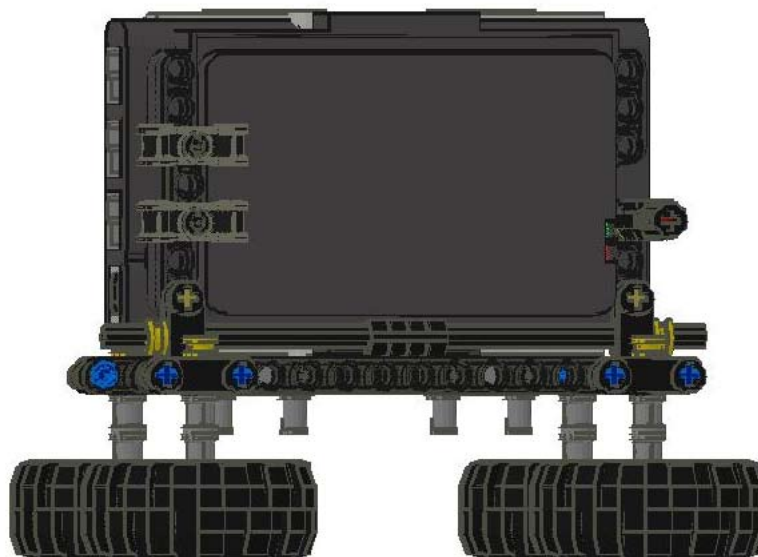
19



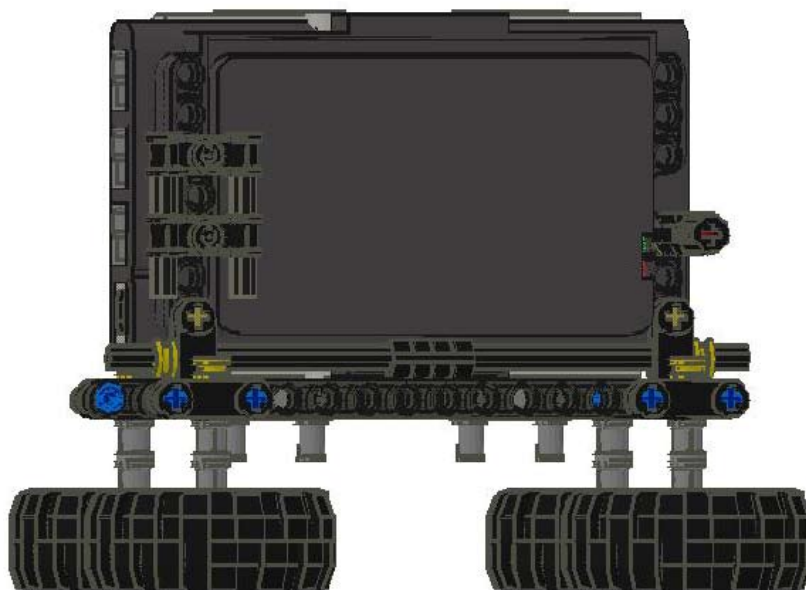
20



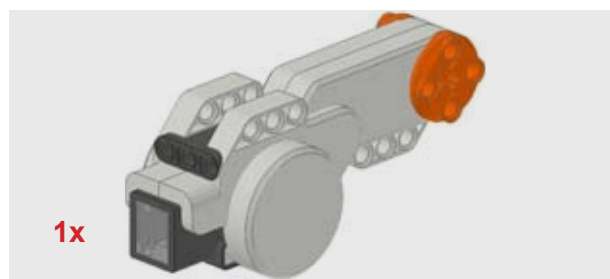
21



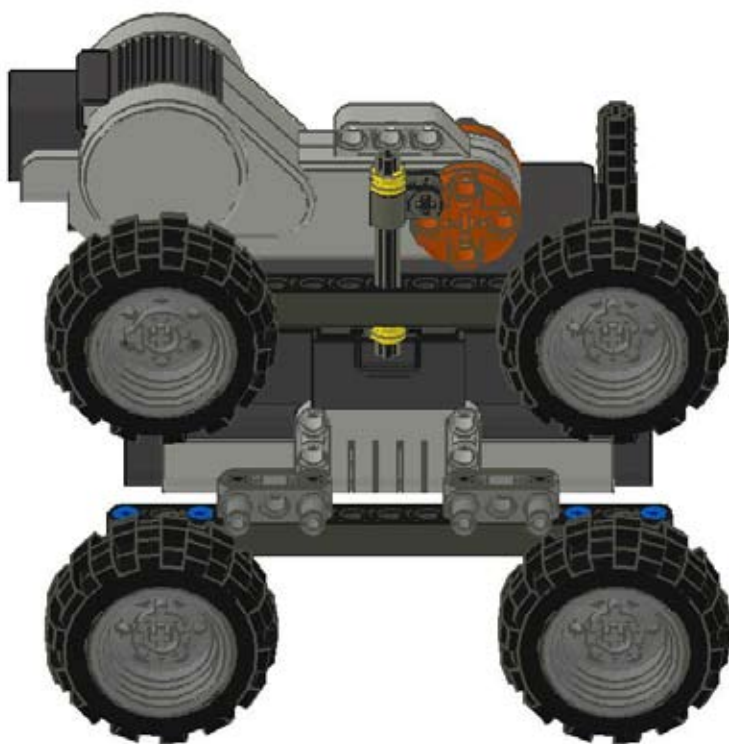
22



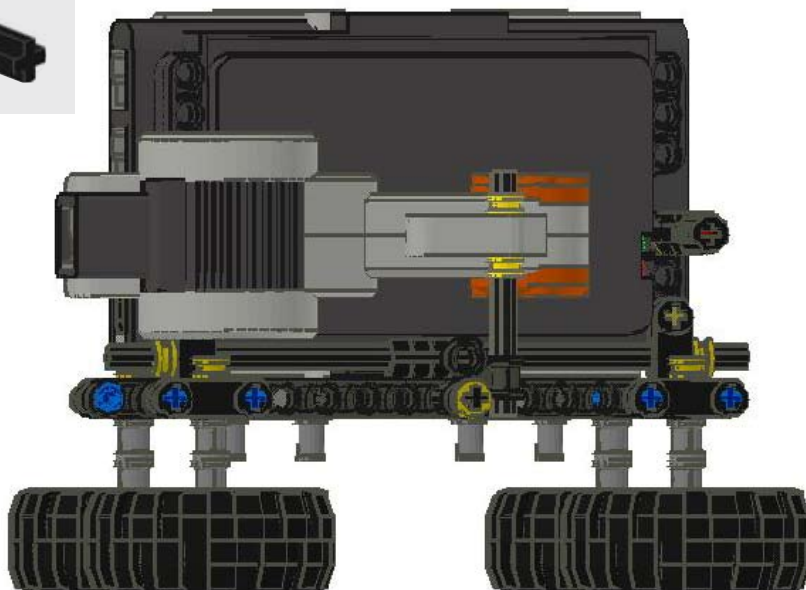
23



24



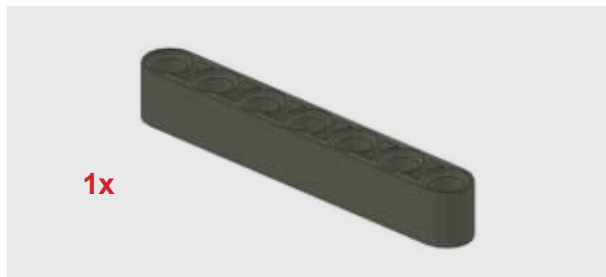
25



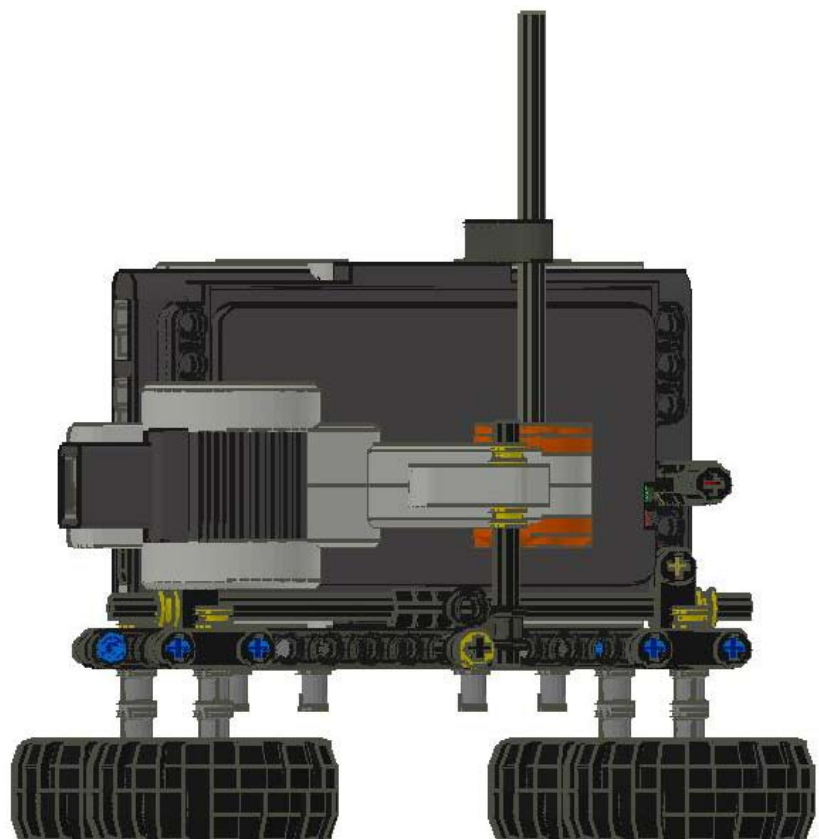
26



27

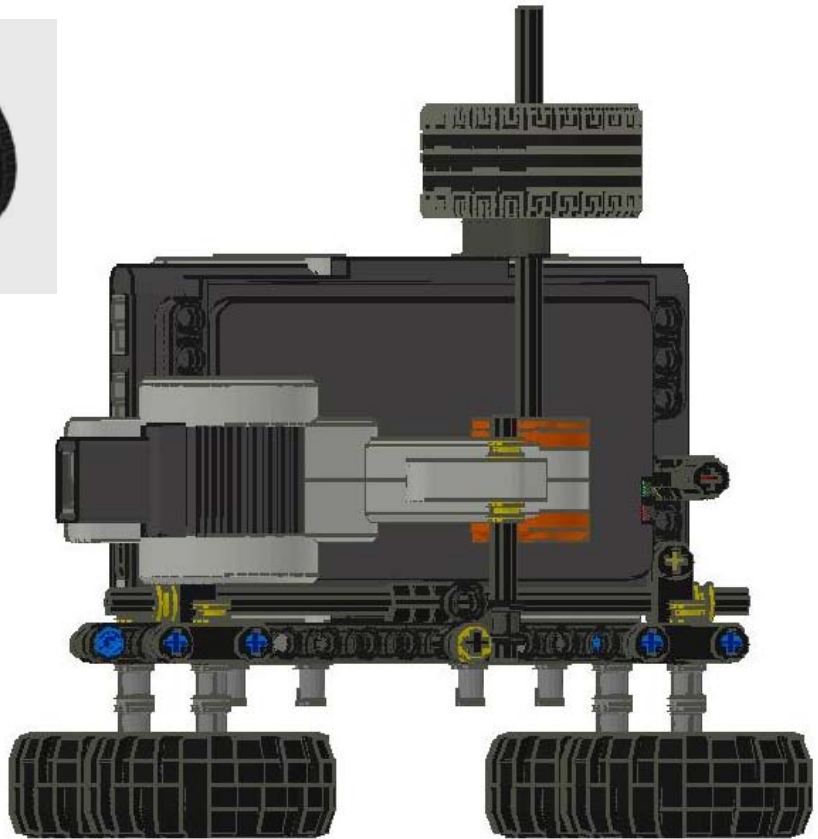


28



DEEP SPACE
TERRAFORMERS

29

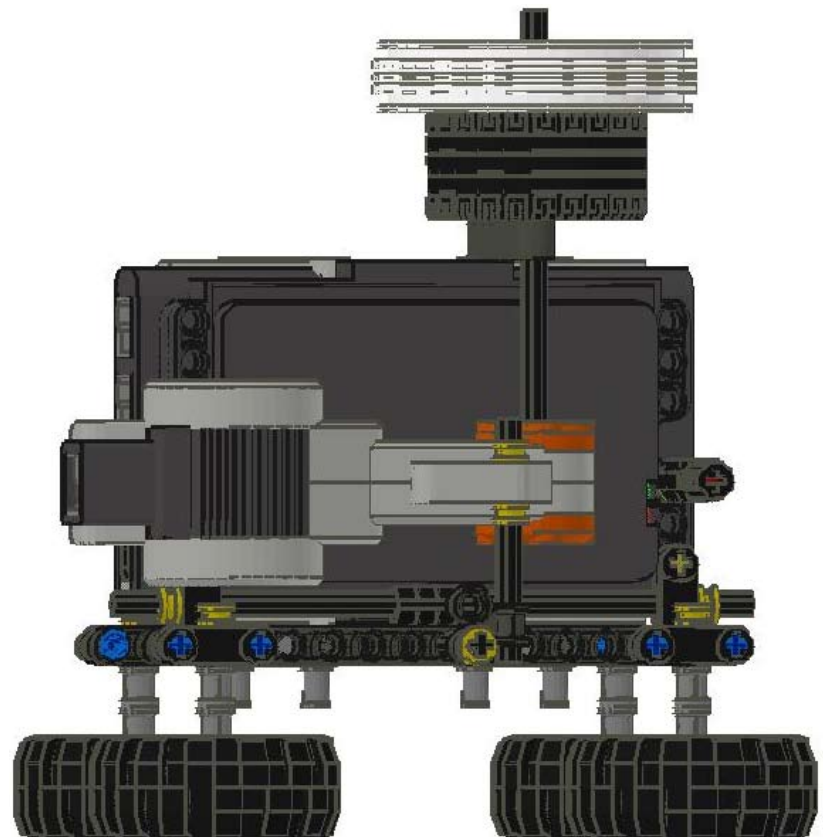


30



You have now completed building the first section of the I.S.S Entropy.

Set it aside and begin to build the second section starting with the next step.



31



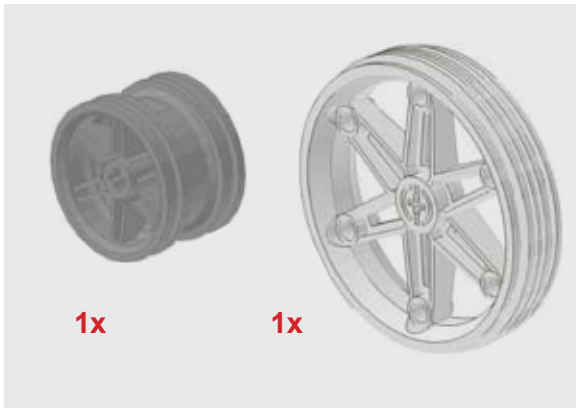
32



33



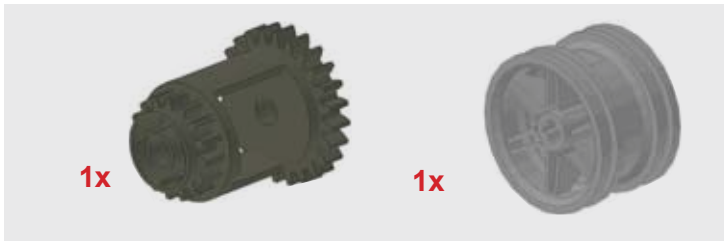
34



35



36



37



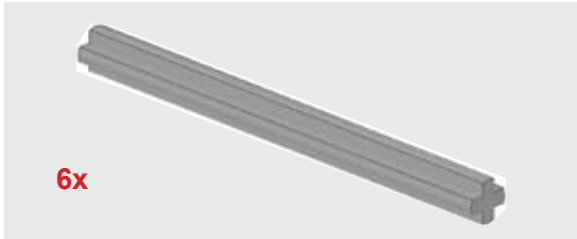
38



39



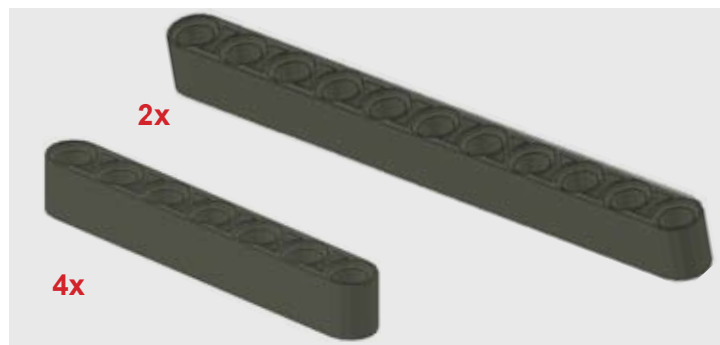
40



41



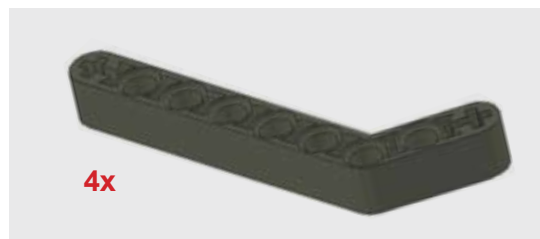
42



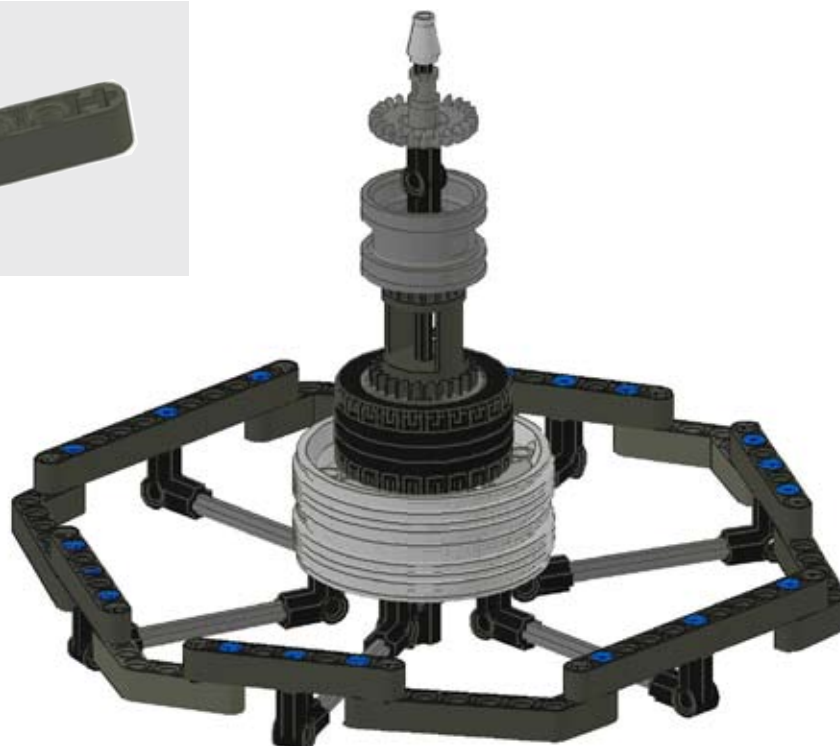
43



44



45

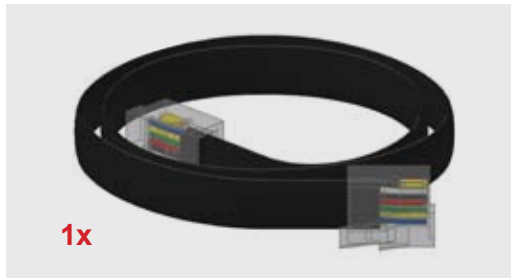


46

You have completed building the top half of the Entropy.

Connect the two sections together. Then, as shown on the next page, add the cable to complete the model.





Congratulations.

The Intergalactic Star Shuttle Entropy is now complete.

If desired, you can write a program to make the top section revolve. Good luck, Terraformers!

