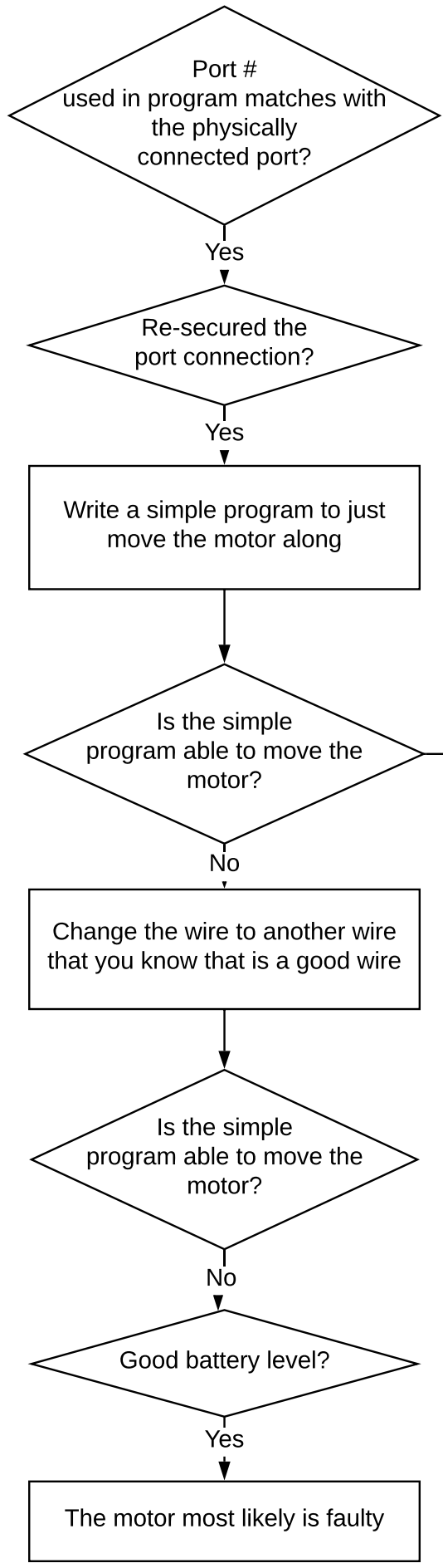
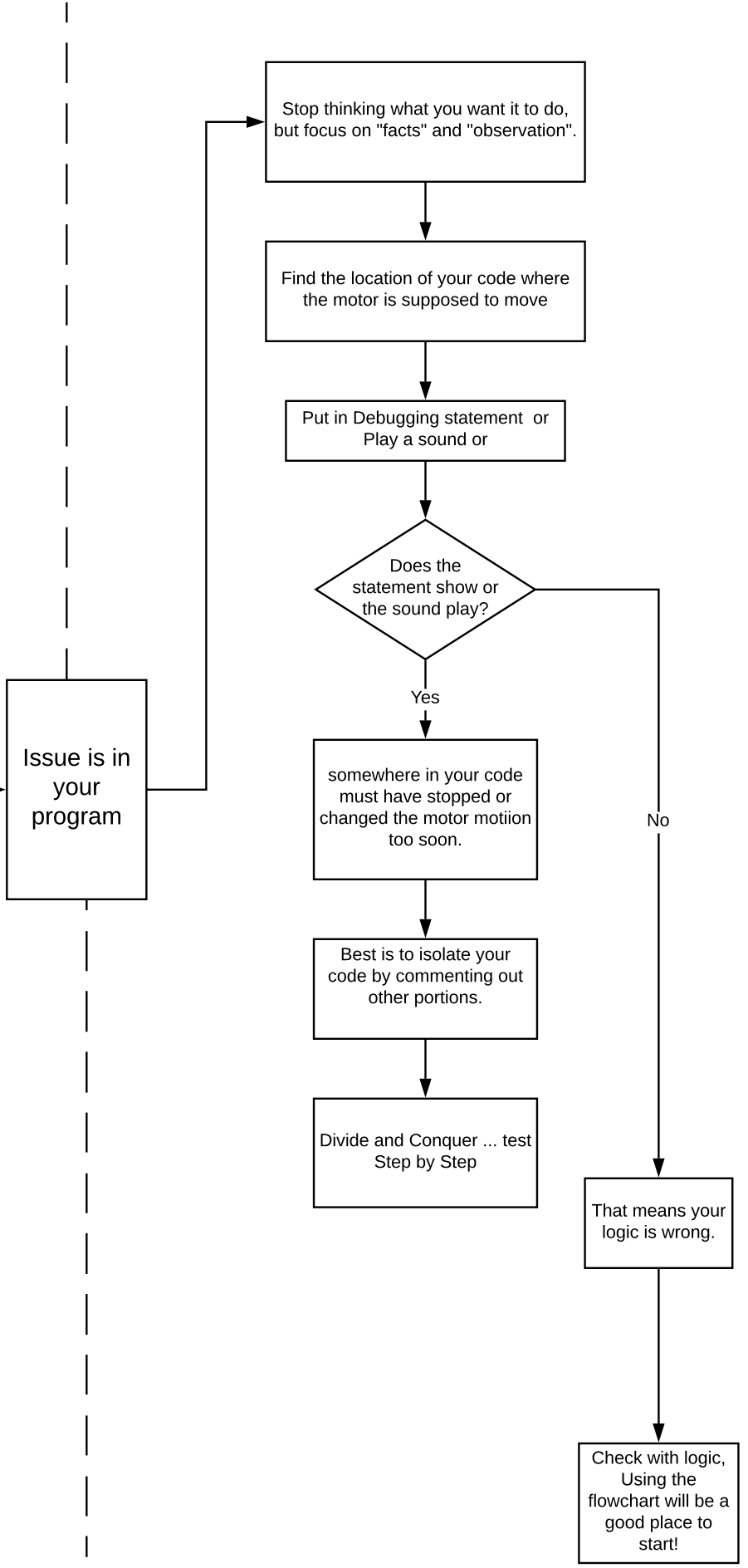


When the motor does not move



When a motor does not move the way I want it to...



Basic Rules of thumb

If your flowchart makes no sense, your code won't make sense.

When a problem goes away on its own, it does not mean it is fixed. In reality, it still exists and most like happen again at the worst time.

Do not make change by wild guess. You may likely to mess up what is already working portion.

Keep an audit trail by record what tests you have tried and what the results are.

Change one thing at a time, and test and validates before trying another change.

KEY.. Divide and Conquer.